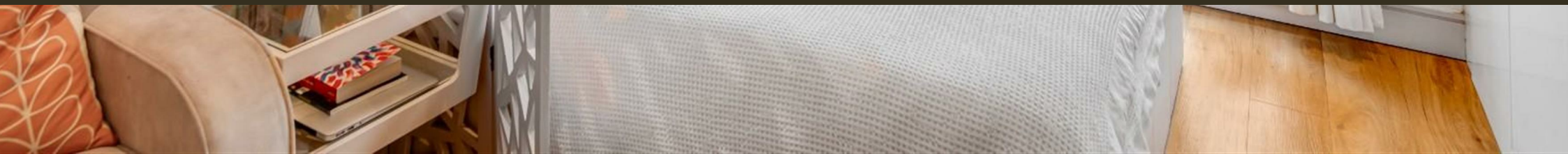




Park Street, Chelsea Creek  
London SW6

GARTON JONES.COM



Park Street, Chelsea Creek  
London, SW6

GARTON JONES.COM

11 Park Street  
Chelsea Creek  
London  
SW6 2FS

Sales +44 (0) 20 7824 7090  
paul@gartonjones.com  
www.gartonjones.com

## £370,000 Leasehold

A stylish furnished studio apartment, 286sq.ft (26.6sq.m) located on the 3rd floor of Compass House which forms part of the highly desirable dockside development Chelsea Creek. The modern studio offers well-presented accommodation living area, kitchen with integrated appliances and luxury bathroom. Onsite there is a 24-Hour Concierge, exclusive use of The Spa, health and fitness suite with an indoor swimming pool, sauna, steam room, gymnasium, and treatment room. The stylish King's Road and Chelsea Harbour, with its many restaurants, bars and boutiques are easily accessible and Imperial Wharf Station is just a few minutes' walk.

\*\*Please note furniture may differ to that shown in the current photo\*\*

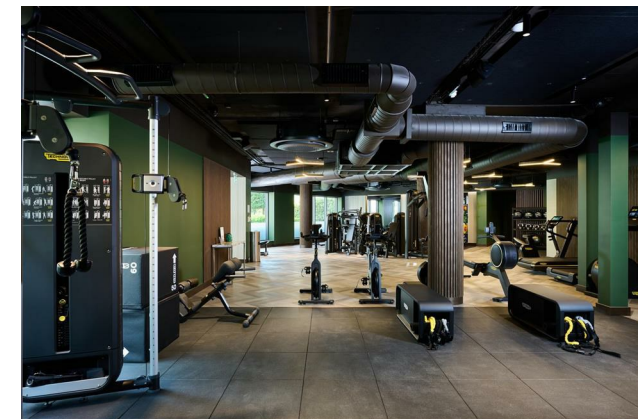
Service Charge - TBC  
Ground Rent - £250PA

Council Tax — London Borough of  
Hammersmith & Fulham — Band D

EPC B(84)

EPC certificate available on request.

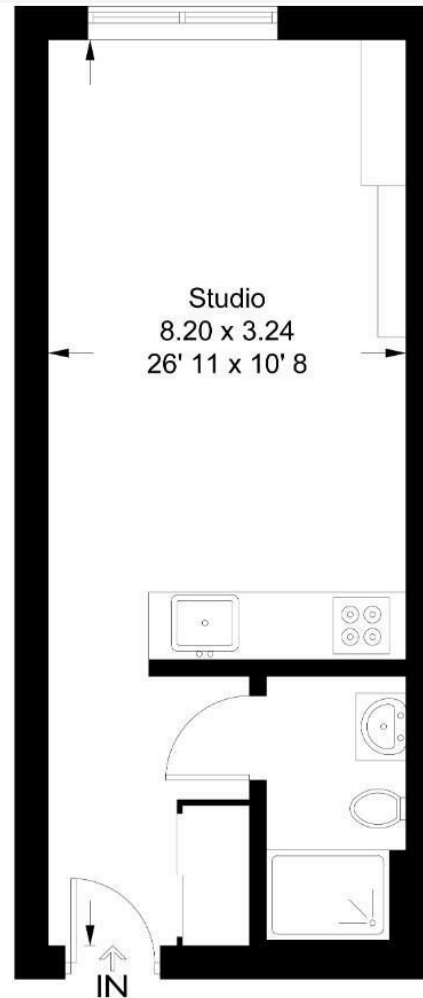
- Gross Rental Yield 5.9%\*
- Stylish Studio Apartment
- Well Maintained Throughout
- 286sqft (26.6sqm)
- Modern Kitchen
- 3rd Floor
- Fitness Centre, Indoor Pool, Sauna & Steam Room, Gymnasium
- 24 Hour Concierge
- Communal Gardens
- EPC B(84)



## Compass House

Approximate Gross Internal Area = 286 sq ft / 26.6 sq m

GARTON JONES  
LONDON



This plan is not to scale and must be used as layout guidance only. All measurements and areas are approximate and should not be relied upon to provide accurate information. This plan must not be relied upon when making property valuations, design considerations or any other such relevant decisions. We accept no responsibility or liability (whether in contract, tort or otherwise) in relation to any loss whatsoever arising from or in connection with any use of this plan or the adequacy, accuracy or completeness of it or any information within it.





